

Where Faster Installation and Performance Meet



Ryerson Image Centre and the School of Image Arts
Toronto, Ontario, Canada

ARCHITECT
Diamond Schmitt Architects Inc., Toronto, Ontario, Canada

GLAZING CONTRACTOR
Stouffville Glass Inc., Stouffville, Ontario, Canada

PHOTOGRAPHY
© Arthur Kendrick

If you're looking for a curtain wall system that's ideal for low- to mid-rise applications, provides high performance and can be assembled in a controlled environment, then the 1600 SS Curtain Wall System is for you. The screw spline joinery allows the 1600 SS Curtain Wall System to be pre-assembled and joint sealed in controlled shop conditions instead of on the job site. By pre-assembling and then delivering larger, ready-to-glaze units, installation time and effort required in the field are minimized.

In addition, Kawneer's 1600 SS Curtain Wall System offers:

- 2-1/2" profile
- Both 6" (152.4 mm) and 7-1/2" (190.5 mm) overall frame depth
- Two-color design options
- Excellent air and water performance
- EPDM gaskets and thermal breaks
- Optional pre-installed thermal separator
- Pre-glazed option

ECONOMY

As budgets continue to tighten and construction schedules become more stringent, the demands for high-quality products, fast installation, simplified fabrication, superior performance and design flexibility have increased. Kawneer’s 1600 SS Curtain Wall System and 1600 SS (Pre-glazed) Curtain Wall System offer a screw spline solution engineered to answer those demands and more. Because both curtain wall systems are offered in stock lengths and/or fabricated, glazing contractors can benefit from the flexibility of providing fabrication and pre-glazing under controlled conditions in their own shop.

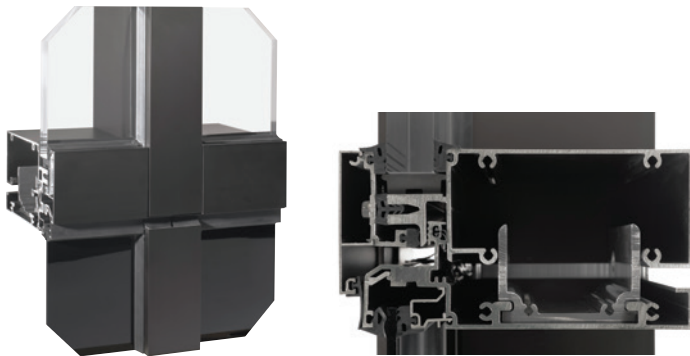
1600 SS CURTAIN WALL SYSTEM

With screw spline joinery, the product can be pre-assembled, joint sealed and delivered to the job site and installed as larger units, minimizing installation in the field.



1600 SS (PRE-GLAZED) CURTAIN WALL SYSTEM

An expansion horizontal allows fully pre-glazed units (fewer pressure plates and covers) to be stacked on top of each other for a true unitized curtain wall option.



PERFORMANCE

The need for anti-buckling clips is eliminated with the 1600 SS Curtain Wall System interlocking mullion design. For added performance, infill options are available up to 1-1/8" (28.6 mm) as well as silicone-compatible glazing materials for long-lasting seals. EPDM gaskets and a thermal break further enhance the performance of the 1600 SS Curtain Wall System. A rain screen pressure equalization solution designed for backpan and perimeter membrane applications complete the offering.

The 1600 SS Curtain Wall System has been tested in accordance with all major standards for curtain walls*:

Air Infiltration	ASTM E283
Static Water Penetration	ASTM E331
Dynamic Water Penetration**	AAMA 501.5
Structural Performance	ASTM E330
CRF	AAMA 1503
U-Factor	AAMA 507, AAMA 1503 and NFRC 100/200/500
Seismic Performance**	AAMA 501.4

* 1600 SS Curtain Wall System and 1600 SS (Pre-glazed) Curtain Wall System additionally tested to Canada standard CSA A440.
 **1600 (Pre-glazed) Curtain Wall System expansion horizontal not tested for listed performance.

AESTHETICS

Narrow sightlines are attainable with the 1600 SS Curtain Wall System – 2-1/2" (63.5 mm) face dimension on both 6" (152.4 mm) and 7-1/2" (190.5 mm) frame depths. Its concealed fastener joinery creates a smooth, monolithic appearance, and designers have the option of different interior and exterior colors. Flexibility is one of the key features of the 1600 SS Curtain Wall System, the perimeter seal can be installed at the pressure plate or mullion shoulder, and screw spline joinery allows it to be assembled in the shop.

Optional features include:

- Captured system thermal separator that can be pre-installed into a pressure plate
- Captured system that can integrate with standard Kawneer windows and entrances
- Captured and SSG systems that can integrate with concealed GLASSvent™ Windows
- Different color options for exterior and interior



FOR THE FINISHING TOUCH

Architectural Class I anodized aluminum finishes are available in clear and Permanodic™ color choices.

Painted finishes, including fluoropolymer, that meet or exceed AAMA 2605 are offered in many standard choices and an unlimited number of specially designed colors.

Solvent-free powder coatings add the “green” element with high performance, durability and scratch resistance that meet the standards of AAMA 2604.